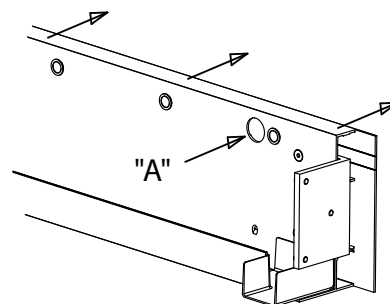
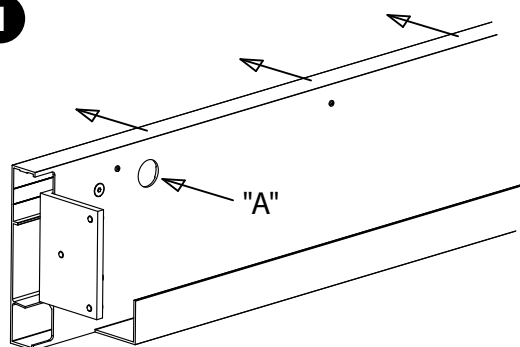
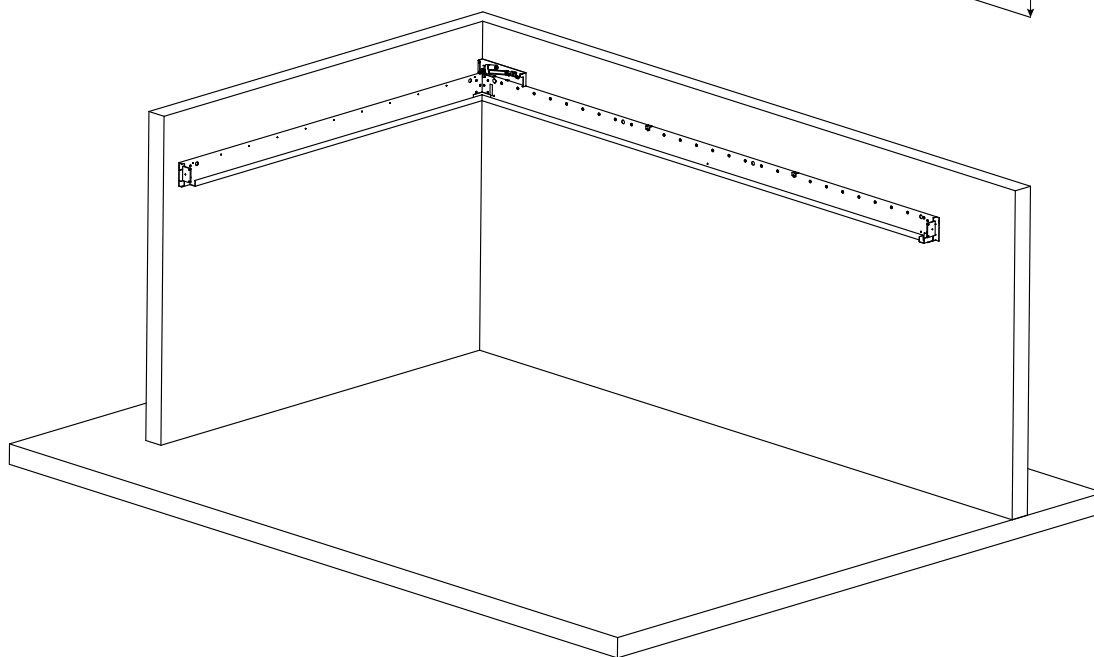
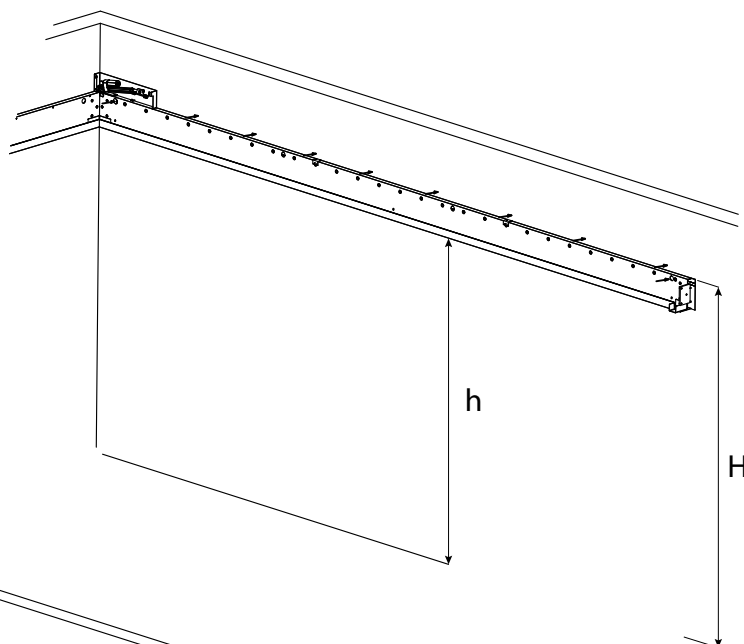
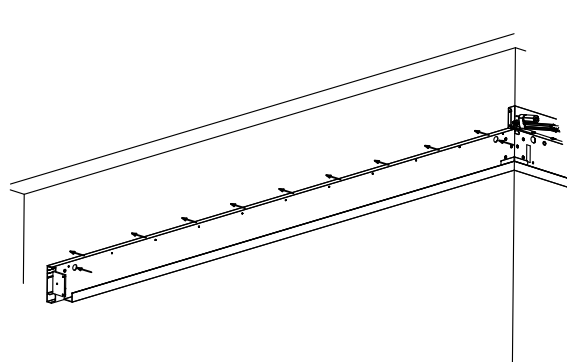
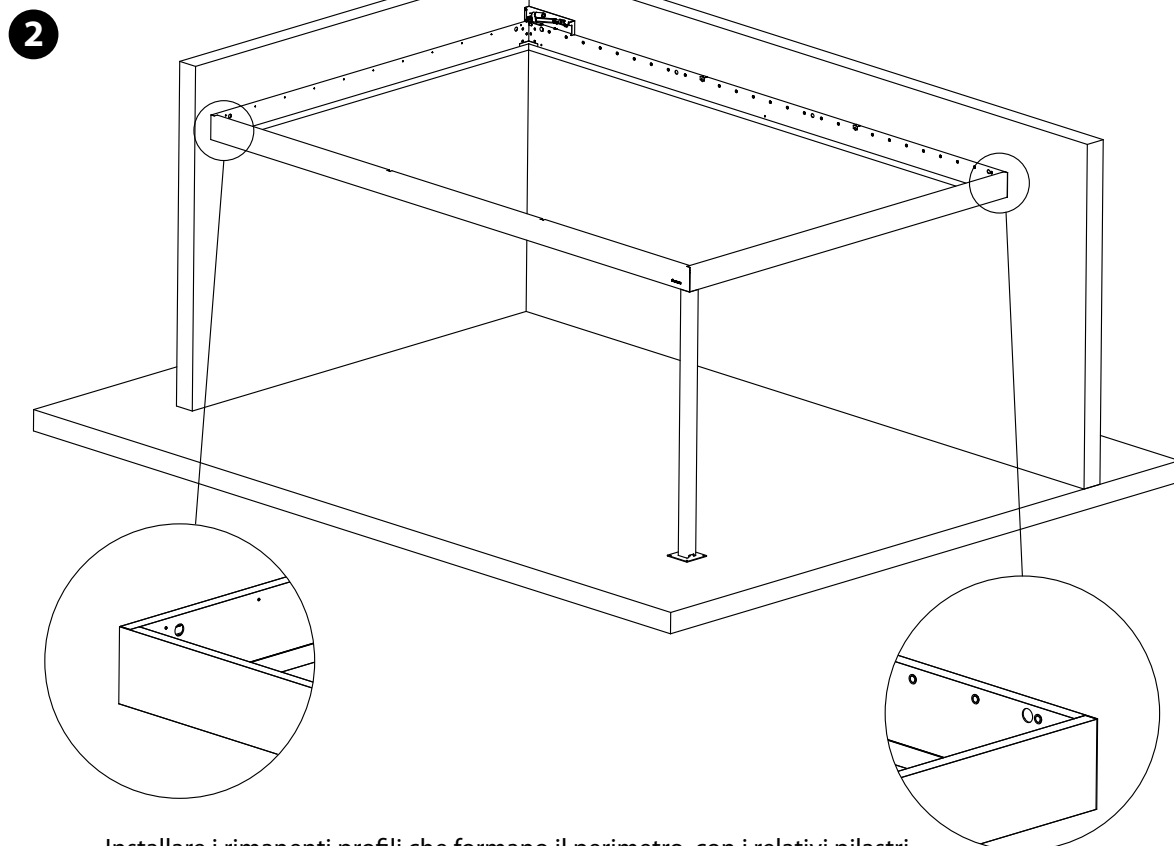


1

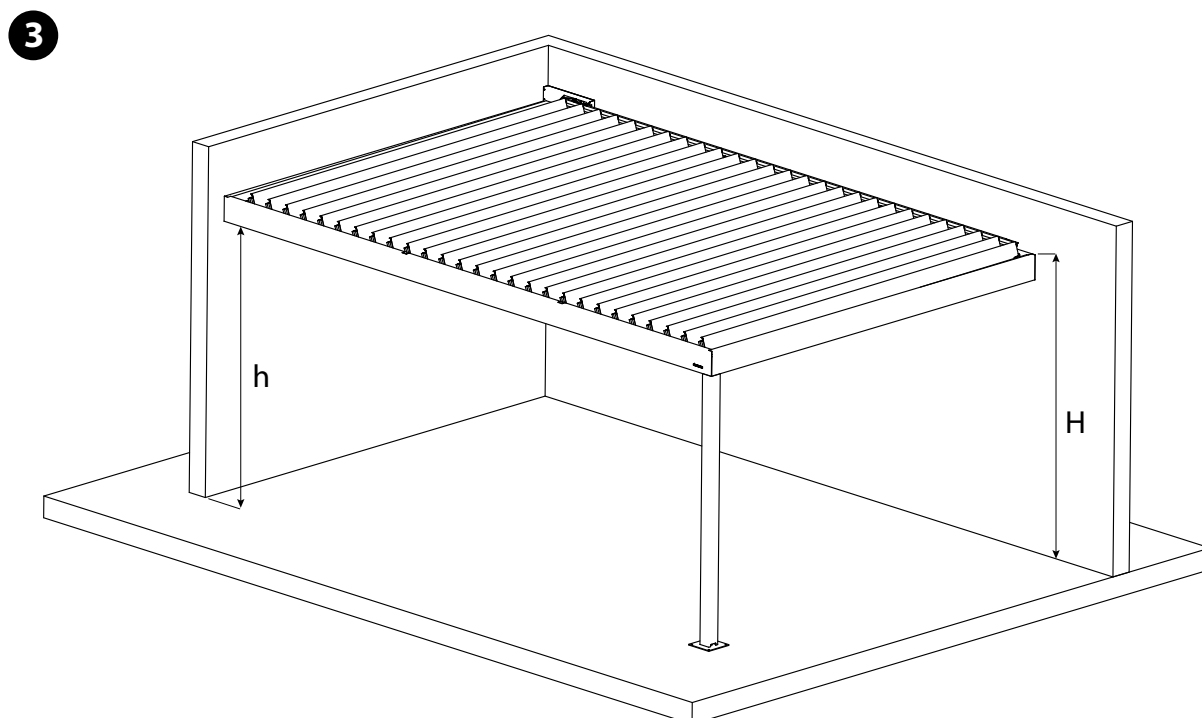


Posizionare i profili portanti sulle pareti preposte (h-H), e fissarli direttamente tramite appropriati tasselli posizionati negli appositi fori "A" (tipo installazione 2.3).
Nei tipi d'installazione 2.1 - 2.2 esiste solo un lato fissato a parete.





Installare i rimanenti profili che formano il perimetro, con i relativi pilastri (vedi istruzioni montaggio versione autoportante).



Terminare l'installazione seguendo le successive fasi elencate nella versione autoportante.